

PLAN DESCRIPTION
**INTERSECTIONAL TREATMENT AT
 JCT HWY 43:10/12 & KAYBOB ROAD
 IN NE 29-62-19-5**

BAR CODE

IN-2186A-02-P
 2186
 17970

PHOTO No.
 TITLE SEARCH DATE
 GRAPHICS FILE

BY DATE
 AMEC FW 15/08/16
 K.H. 28/08/16
 K.H. 07/09/16
 T.O.L. 06/09/16

REVISION
 AS-BUILT
 ISSUED FOR CONSTRUCTION
 ISSUED FOR TENDER
 ISSUED FOR REVIEW

ISSUED FOR CONSTRUCTION
 9 DECEMBER 2016

CONSULTANT
 amec foster wheeler
 Environment & Infrastructure

PERMIT TO PRACTICE
 AMEC Foster Wheeler Environment & Infrastructure
 a Division of AMEC Foster Wheeler Americas Limited
 Signature: KP SMITH
 Date: 14 DECEMBER 2016
PERMIT NUMBER: P-04546
 The Association of Professional Engineers,
 and Geoscientists of Alberta

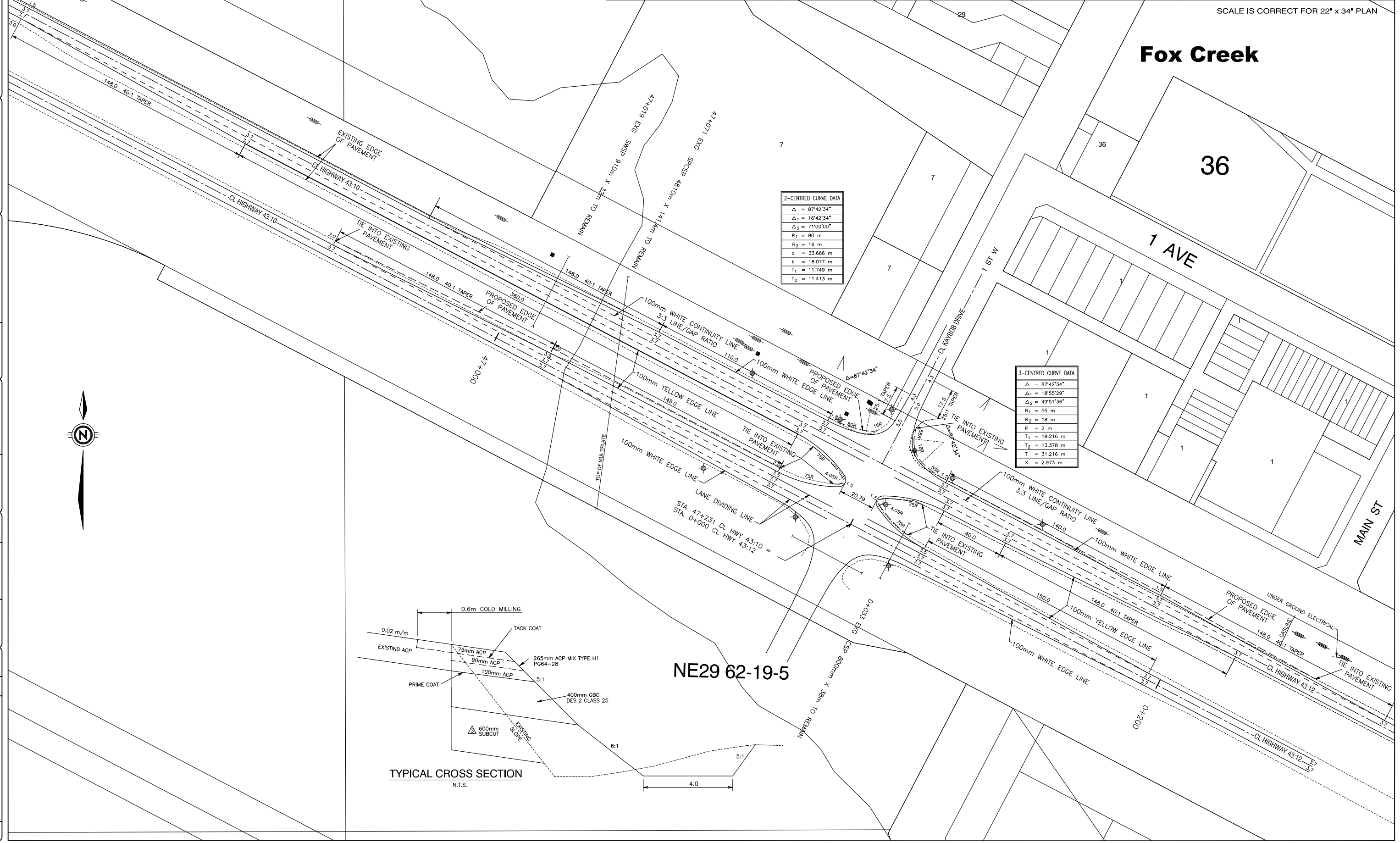
DESIGNER
 PROFESSIONAL ENGINEER ALBERTA
 ORIGINAL STAMPED AND SIGNED BY
 K.F. HELBERG
 14 DEC. 2016

CHECKER
 PROFESSIONAL ENGINEER ALBERTA
 ORIGINAL STAMPED AND SIGNED BY
 E. MIRANDA
 14 DEC. 2016

INTERSECTIONAL TREATMENT AT
JCT HWY 43:10/12 & KAYBOB DRIVE
 IN NE 29-62-19-5

REGION	SITE No.	PLAN No.	PROJECT	CONTRACT No.	SHEET
PEACE	2186	IN-2186A-02-P	HWY 43:10/12	17970	1 of 1

SCALE IS CORRECT FOR 22" x 34" PLAN



2-CENTRED CURVE DATA

Δ	= 87°42'34"
Δ_1	= 16°42'34"
Δ_2	= 71°00'00"
R_1	= 80 m
R_2	= 16 m
a	= 33.666 m
b	= 18.077 m
T_1	= 11.749 m
T_2	= 11.413 m

3-CENTRED CURVE DATA

Δ	= 87°42'34"
Δ_1	= 18°55'29"
Δ_2	= 49°51'36"
R_1	= 55 m
R_2	= 18 m
P	= 2 m
T_1	= 19.216 m
T_2	= 13.378 m
T	= 31.216 m
X	= 2.973 m

